

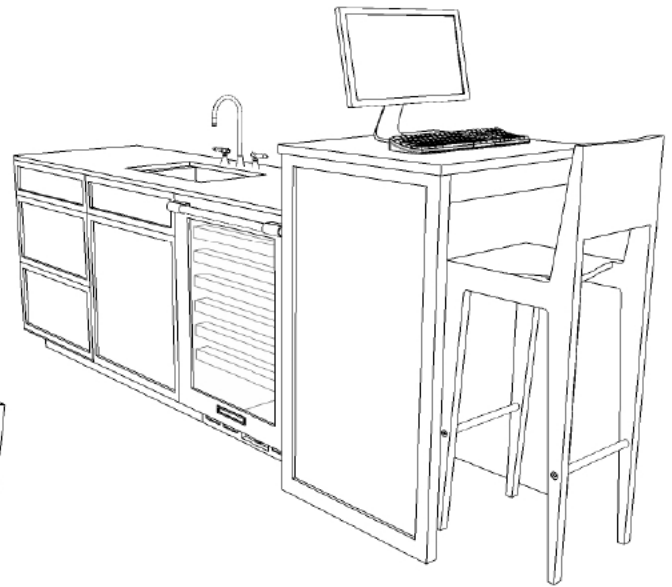
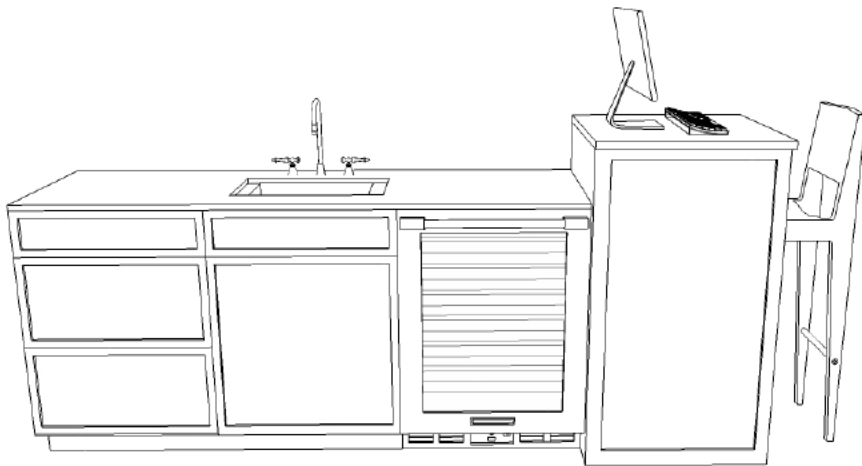


KITCHEN DESK ATTACHMENT

With the kitchen being the hub of the home, and more and more technology being integrated into the kitchen, it only make sense that you are going to need a place for your computer. This easy to make desk arrangement, allows for easy access to your computer, a small desk area, and more countertop space.

Supplies You Will Need from the RTA Cabinet Store

- ✓ One 30" sink base
- ✓ One 21" three drawer base cabinet
- ✓ One 84" refrigerator panel
- ✓ One 30" wall filler
- ✓ One dishwasher end panel
- ✓ One piece of outside corner molding
- ✓ One 8' piece of toe kick



RTA
CABINET STORE

www.rtacabinetstore.com

P. 610-337-5934 F. 484-231-8726

Instructions to Build a Kitchen Desk Attachment

Step 1: Install the two base cabinets.

Step 2: Leave enough space for the wine cooler or refrigerator, and mark edge of it on the wall.

Step 3: Take the dishwasher end panel, and put it in place (leaving enough room for the refrigerator). Secure the back end of the dishwasher panel to the wall using nailing blocks.

Step 4: Take the 84" refrigerator panel and cut that in half.

Step 5: Take one half of the refrigerator panel, and secure it to the dishwasher end panel, leaving the trim piece off.

Step 6: Take the other half of the refrigerator panel and secure that to the front edge of the other refrigerator panel piece. (This will create the front side of the desk, which is parallel with the front of the base cabinets).

Step 7: Take the wall filler strip, and cut it to size so that it fits between the wall and the side of the desk (where the drawer is in the picture).

Step 8: Use the scribe molding to trim out the edge of the desk next to the dishwasher end panel.

Step 9: Cut the toe kick to length to trim out the bottom edge of the base cabinets.

My Design Notes