

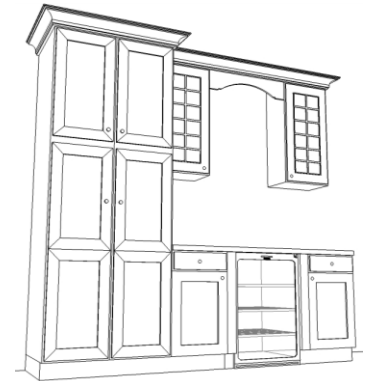
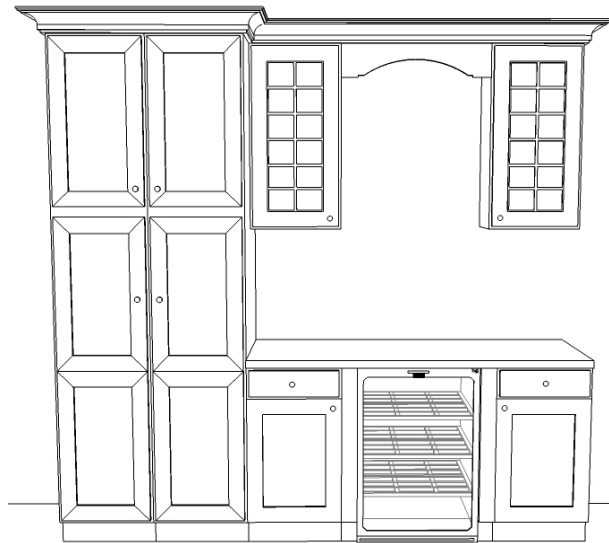
KITCHEN PANTRY WITH MINI FRIDGE

This design uses some creative detailing to give the kitchen a custom look. While it looks high end, this design can be made out of any of our stock cabinet lines. The high end look comes from decorative filler strips and a unique way to install the crown molding which I would mention in the design below. Using accent under cabinet lighting really helps to accentuate the look. The height of the wall cabinets and the pantry can be adjusted, but for this example we used 30" high wall cabinets.



Supplies You Will Need from the RTA Cabinet Store

- ✓ One 24" wide x 84" high pantry
- ✓ Two 18" wide x 30" high wall cabinets
- ✓ Two 15" wide base cabinets (or drawer base cabinets as an alternative)
- ✓ Four decorative 3" base fillers (or four regular base fillers with custom appliques)
- ✓ One decorative valance
- ✓ Three 8' lengths of toe kick
- ✓ Two 8' lengths of crown molding
- ✓ Two 18" wide x 30" high mullion doors
- ✓ One pint of stain



RTA
CABINET STORE

www.rtacabinetstore.com
P. 610-337-5934 F. 484-231-8726

Instructions to Build a Kitchen Pantry with Mini Fridge

Step 1: Start by installing the pantry, securing it to the wall.

Step 2: Install the wall cabinets, ensuring they are level with the top of the pantry. Leave a gap the width of the appliance you are putting below, along with an extra 6" of space.

Step 3: Take the valance and secure it between the two wall cabinets. Secure it with screws through the face frame.

Step 4: Take the two 15" base cabinets and attach a filler strip to each side of the face frame, securing it directly the face frame.

Step 5: Take one of the 15" base cabinets with the filler strips attached, and secure it to pantry and the wall behind it.

Step 6: Leaving room for the appliance, secure the other base cabinet into position.

Step 7: To create the double height crown molding as displayed in the picture, it will require a combination of toe kick and crown. The traditional way of installing the thick crown is to take a piece of toe kick, and attach the crown molding to it, leaving half of the toe kick exposed (but this will vary depending on the height of your ceilings). The best way to secure all of this together is to attach small nailing blocks to the top of the cabinets. Cut the toe kick to the appropriate sizes to fit the top of the cabinets, and secure it to the nailing blocks. Once the toe kick is in place, cut the crown molding to length and secure it to the toe kick using brad nails or trim nails. Make sure you use a miter saw to cut the crown molding so that you get that professionally finished look.

Step 8: Using the remaining toe kick, trim out the bottom of the cabinets to create a seamless look across the bottom.

Step 9: Use stain for touchup where needed.

My Design Notes