

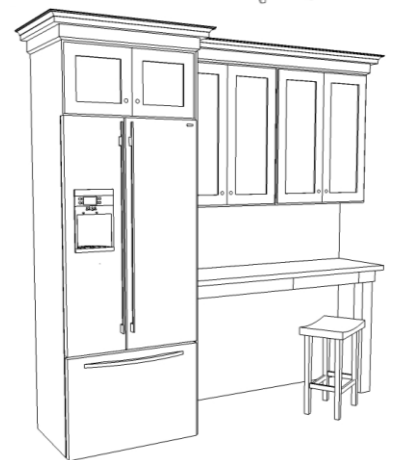
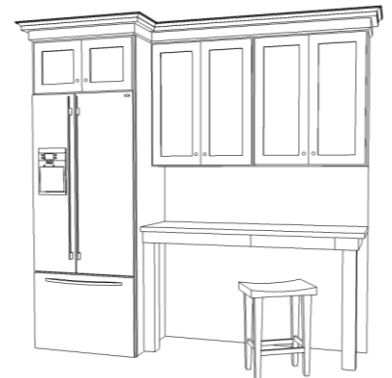
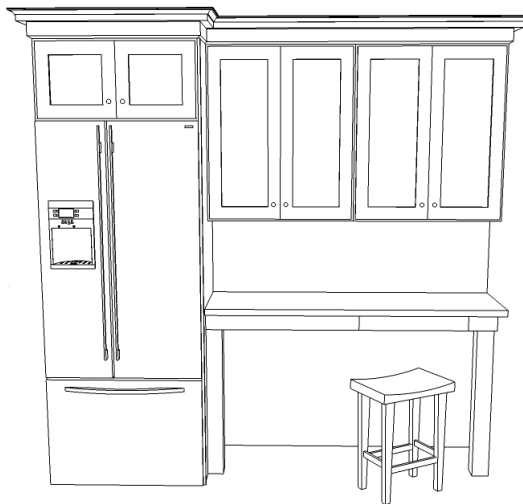


REFRIGERATOR AND DESK COMBO

With today's busy lifestyle, incorporating technology and functionality into the kitchen is a must. While this isn't a complicated design, it makes good use of the space and adds a desk area to the kitchen that can also be used for food prep or as a work area. This can be accomplished using any of our cabinet styles. For the instructions, we just focused on the refrigerator and desk area.

Supplies You Will Need from the RTA Cabinet Store

- ✓ Two 96" refrigerator panels
- ✓ One 362424 wall cabinet (will vary depending on the height of your refrigerator)
- ✓ Two 24" wide x 42" high wall cabinets
- ✓ Two straight valances
- ✓ Decorative Furniture Legs or Maple Posts
- ✓ Pint of Stain
- ✓ One 8' piece of toe kick
- ✓ One 8' piece of crown molding
- ✓ One piece of 2x4 lumber



Instructions to Build a Refrigerator and Desk Combo

- Step 1: Measure out the location of the refrigerator and end panels. Start by installing the double deep wall cabinet over the refrigerator, securing it to the wall.
- Step 2: Install the two refrigerator end panels, securing them to the wall cabinet at the face frame.
- Step 3: Install the two 42" high wall cabinets and secure them to the wall, the face frame of each cabinet, and to the refrigerator panel.
- Step 4: Determine the height of the desk, and secure the piece of 2x4 to the wall at the appropriate height (leaving space above for the counter top).
- Step 5: Cut the decorative legs or maple posts to height so that they are equal to the height of the 2x4 on the wall.
- Step 6: Take the straight valances and cut to desired length and depth of the desk (subtracting for the size of the furniture legs on the corners).
- Step 7: Secure the straight valances to the posts or legs to create the framing of the desk. Secure the front leg to the adjacent refrigerator panel, and the other corner to the 2x4 on the wall. (Note: Depending on what type of countertop you are installing, you can consider adding a sheet of plywood to the top for extra rigidity.)

My Design Notes